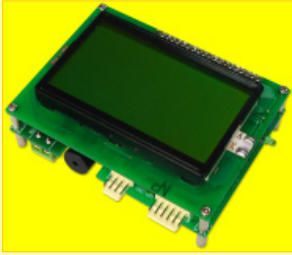
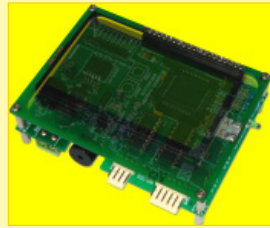


**ET-REMOTE GLCD12864 V1.0**  
(P-ET-A-00355)

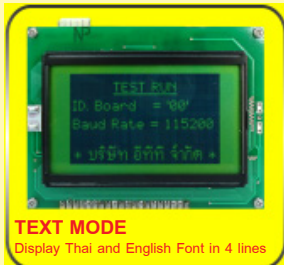
**ET-REMOTE GLCD12864 V1.0 BACKLIGHT**  
(P-ET-A-00356)



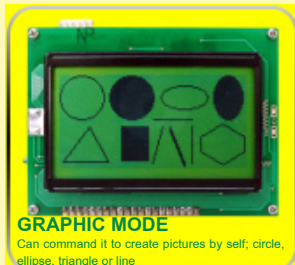
ET-REMOTE GLCD12864 V1.0 is 128 x 64 DOT DISPLAY LCD with control board. Now, there are 2 versions as follows;  
 1. ET-REMOTE GLCD12864 V1.0; it is a normal LCD.  
 2. ET-REMOTE GLCD12864 V1.0 BACKLIGHT; it is a LCD that has BACKLIGHT.



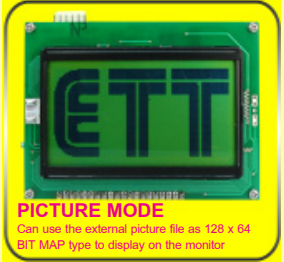
- 128 x 64 DOT DISPLAY with control board for displaying values by using ASCII CODE Command
- Can receive commands to control operation through PORT RS232, RS422 and 4-WIRE RS495
- Set Baud Rate by DIP SW in the range of 1,200 - 115,200
- Set ID into board by DIP SW in the range of 00 -FF to use NETWORK Communication by RS485
- MINI SP to generate musical notes and control ON/OFF LED BACKLIGHT
- 3 MODES; TEXT MODE, GRAPHIC MODE, and PICTURE MODE; all operation modes can be used together.



**TEXT MODE**  
Display Thai and English Font in 4 lines



**GRAPHIC MODE**  
Can command it to create pictures by self; circle, ellipse, triangle or line



**PICTURE MODE**  
Can use the external picture file as 128 x 64 BIT MAP type to display on the monitor



Can use all 3 operation modes together; GRAPHIC + TEXT + PICTURE

**TEXT MODE**

- Can display both Thai and English Font without creating FONT by self
- English Font size is 5 x 7 DOT; for Thai Font height is 7 DOT but its width depends on each character that makes each character beautiful. It uses FONT WINDOWS MS SANS, SERIF
- Display all Thai and English Font about 4 line 16 characters or more; depend on the size of Thai consonants
- Can configure any location on the monitor to display character
- Can justify message on the left, right or centre position of the line as desired.

**GRAPHIC MODE**

- There are commands to create pictures; triangle, quadrilateral, circle, ellipse and straight line in any size and position on the monitor
- Can FILL the whole picture with black color or display it as lines

**PICTURE MODE**

- Can use the external picture file that is 128 x 64 DOT BITMAP type to convert and display on the monitor

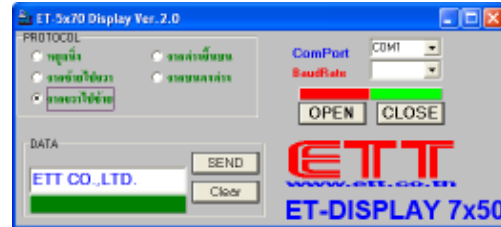
- Board size: 7 x 9.4 cm. 3.5 cm. Height and Display size: 7.2 x 4.0 cm.
- POWER ON SUPPLY BOARD as SWITCHING type uses LM2575-5 INPUT AD/DC 7-12V, CONNECTOR POWER as TERMINAL BLOCK type
- CONNECTOR 4 PIN ETT RS232 PORT MAX232, CONNECTOR 6 PIN ETT RS422/485 PORT (75176 ON BOARD)
- ET-REMOTE GLCD12864 V1.0/ V1.0 BACKLIGHT includes

1. Board with DISPLAY
2. ET-RS232 DB P PIN CABLE
3. 4 PIN RS232 CABLE
4. CD-ROM



**ET-DISPLAY 7 x 50**

(P-ET-A-00084)



ET - DISPLAY 7 x 50 ET-DISPLAY 7 x 50 is a Character Display Board with red 10 Digit 5 x 7 Dot Matrix LED and be able to arrange in size 7 x 50 and display 8 character in ENGLISH. Its memory is EEPROM and be able to write message although electricity is switched off. Users can write message into DISPLAY 7 x 50 through PORT RS232 of Computer PC and be able to run on window 95, 98

- CPU MCS51 NO. AT89S8252 RUN 18.432 MHz WITH 2 KBYTE EEPROM
- SEND/RECEIVE DATA THROUGH PORT RS232 AND BE ABLE TO CONNECT WITH COMPUTER PC OR ETT'S BOARD
- 6 MODE INSTRUCTIONS FOR DISPLAY SUCH AS RUN FROM RIGHT TO LEFT SIDE, RUN FROM LEFT TO RIGHT SIDE, RUN FROM DOWN TO UP, RUN FROM UP TO DOWN, AND IMMOVABLE DISPLAY
- BE ABLE TO RECEIVE 30 MESSAGES TO DISPLAY WITH 64 LETTERS TOTAL 1,920 LETTERS, KEEP IN 2 KBYTE EEPROM AND BE ABLE TO SAVE THEM IN EEPROM ALTHOUGH ELECTRICITY IS SWITCH OFF
- BE ABLE TO ADAPT IN MANY WORKS SUCH AS BOARD IN SHOPS, BOARD DISPLAY CONNECTING WITH COMPUTER PC AND ETC.
- THERE'S 2 USER MANUAL OF BOARD, 2 MODE PROGRAM AS SOURCE PROGRAM MONITOR, AND MESSAGES AND INSTRUCTION PROGRAM RUN ON WINDOWS 95, 98
- DISPLAY SIZE 23 x 4 CM BOX SIZE 7.5 x 4.2 x 34 CM
- ET-DISPLAY 7 x 50 INCLUDES;
  1. BOARD WITH PLASTIC BOX
  2. ADAPTER DC 10V
  3. USER MANUAL
  4. CD-ROM
  5. 9 PIN DB CABLE CONNECTING WITH COMPUTER PC THROUGH PORT RS232

