

## Using the C30 Compiler to Interface SPI Serial EEPROMs with dsPIC33

Author: Martin Kvasnicka  
Microchip Technology Inc.

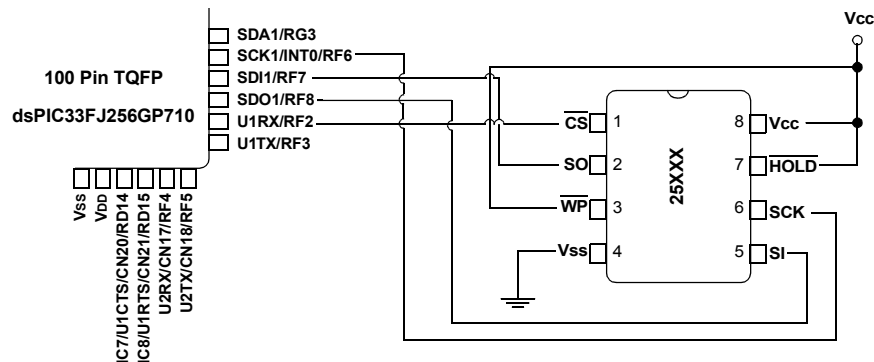
### INTRODUCTION

The 25XXX series serial EEPROMs from Microchip Technology are SPI compatible and have maximum clock frequencies ranging from 3 MHz to 20 MHz. Many times when designing an application which utilizes a serial EEPROM device, it may be beneficial to use a microcontroller which does not feature a dedicated protocol-specific serial port. This can be due to several possible reasons, including size restrictions or costs. In these instances, it is required of the designer to write software routines capable of generating the proper signals for communicating with the EEPROM device.

This application note provides assistance and source code to ease the design process of interfacing a Microchip dsPIC33F Digital Signal Controller to a Microchip SPI serial EEPROM, without the use of a hardware serial port.

Figure 1 describes the hardware schematic for the interface between Microchip's 25XXX series devices and the dsPIC33F DSC. The schematic shows the connections necessary between the DSC and the serial EEPROM as tested, and the software was written assuming these connections. The WP and HOLD pins are tied to Vcc through resistors, because the write-protect and hold features are not used in the examples provided.

**FIGURE 1: CIRCUIT FOR dsPIC33F256GP710 AND 25XXX SERIES DEVICE**



**Note:**  $\overline{\text{CS}}$ ,  $\overline{\text{WP}}$  and  $\overline{\text{HOLD}}$  pins should all have pull-up resistors (~10k-ohms).

## FIRMWARE DESCRIPTION

The purpose of the program is to show individual features of the SPI protocol and give code samples of the instructions and addressing schemes so that the basic building blocks of a program can be shown. The firmware performs the following operations:

- Low-Density Byte Write
- Low-Density Byte Read
- Low-Density Page Write
- Low-Density Sequential Read
- Write Enable
- WIP Polling

In addition, the following operations are available but not explicitly illustrated:

- High-Density Byte Write
- High-Density Byte Read
- High-Density Page Write
- High-Density Sequential Read
- Write Disable
- Read Status Register
- Write Status Register

The low-density routines are intended for use with the 4K and smaller density devices that use only one byte for addressing. The high-density routines are intended for use with 8K and higher density devices that use two bytes for addressing. This program also exhibits the WIP polling feature for detecting the completion of write cycles after the byte write and page write operations. Read operations are located directly after each write operation, thus allowing for verification that the data was properly written. No method of displaying the input data is provided, but a SEEVAL<sup>®</sup> 32 evaluation system, an oscilloscope, or a Microchip MPLAB<sup>®</sup> ICD 2 could be used.

The low-density code was tested using the 25LC040A serial EEPROM. This device features 512 x 8 (4 Kbit) of memory and 16-byte pages. The high-density code was tested using the 25LC256 serial EEPROM. This device features 32K x 8 (256 Kbit) of memory and 64-byte pages. Only the low-density operations are illustrated in this application note.

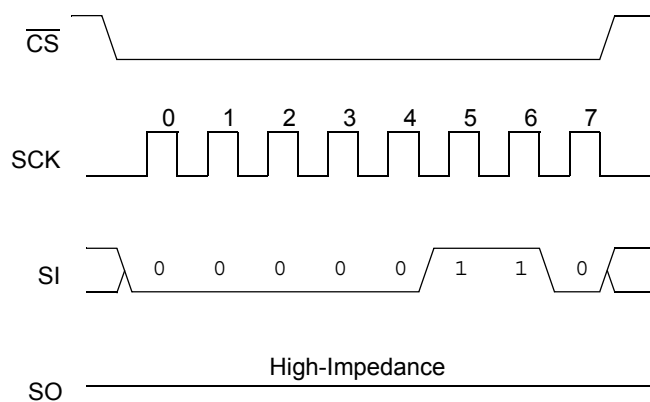
Oscilloscope screen shots are labeled for ease in reading. The data sheet versions of the waveforms are shown below the oscilloscope screen shots. All timings are designed to meet the data sheet specs, and an 8 MHz crystal oscillator is used to clock the dsPIC33F DSC. If a different clock is used, the code may need to be modified to avoid violating timing specs. All values represented in this application note are decimal values unless otherwise noted.

## WRITE ENABLE

Figure 2 shows an example of the Write Enable command. Chip Select is brought low (active) and the opcode (0x06) is shifted out. The Write Enable command must be given in order to set the WEL bit before

a write is attempted to either the array or the STATUS register. The WEL bit can be cleared by issuing a Write Disable command (WRDI) and is also automatically reset if the device is powered down or if a write cycle is completed.

**FIGURE 2: WRITE ENABLE (WREN)**

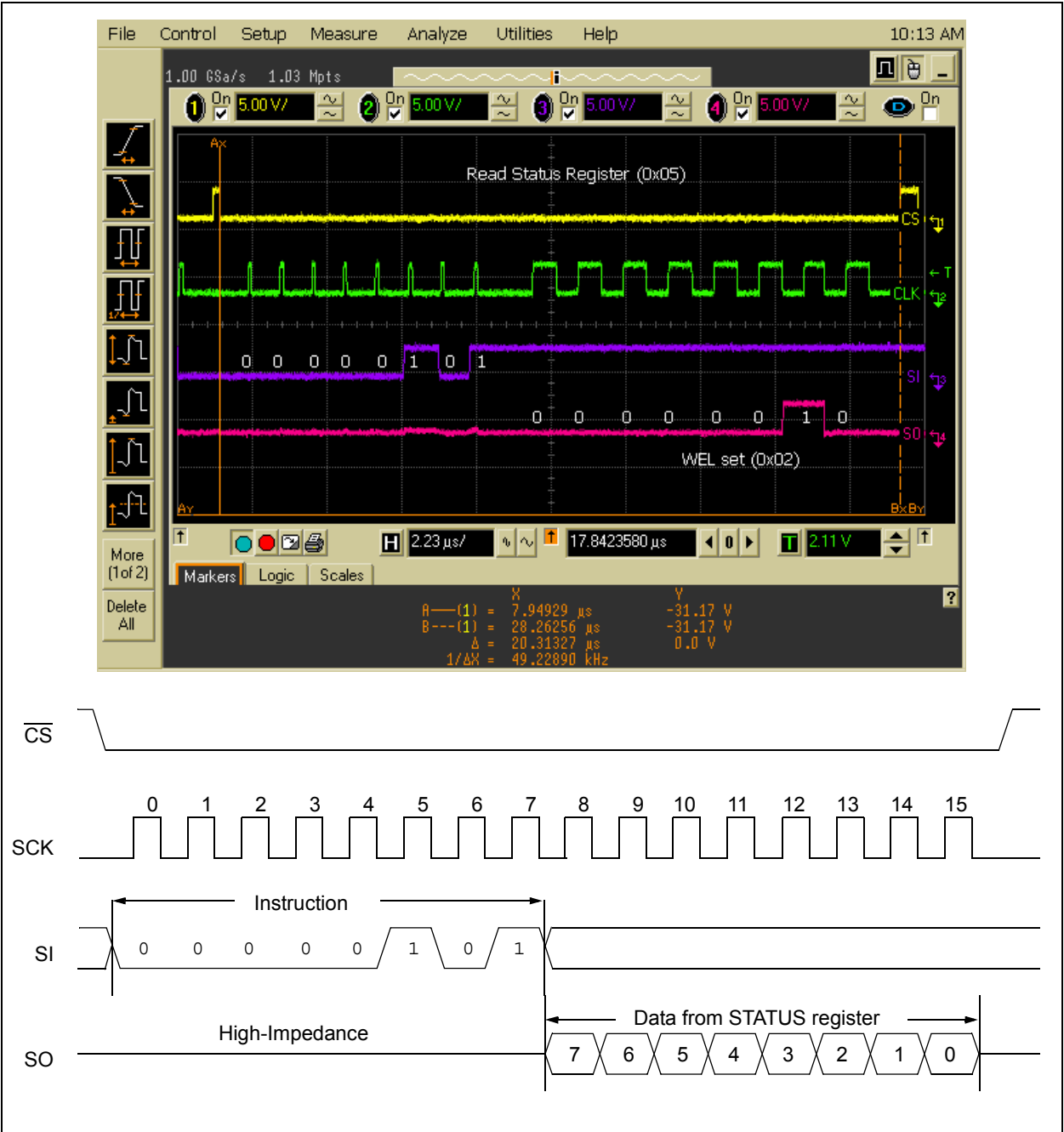


READ STATUS REGISTER TO CHECK FOR WEL BIT

Figure 3 shows an example of the Read Status Register command to check for the WEL bit. This bit must be set before a write is attempted to either the STATUS register or the array. It is good programming practice to check for the bit to be set before attempting the write. Once again the device is selected and the opcode (0x05) is sent.

The STATUS register is shifted out on the Serial Out pin. A value of 0x02 shows that the WEL bit in the STATUS register has been set. The device is now ready to do a write to either the STATUS register or the array.

FIGURE 3: READ STATUS REGISTER TO CHECK FOR WEL BIT (RDSR)



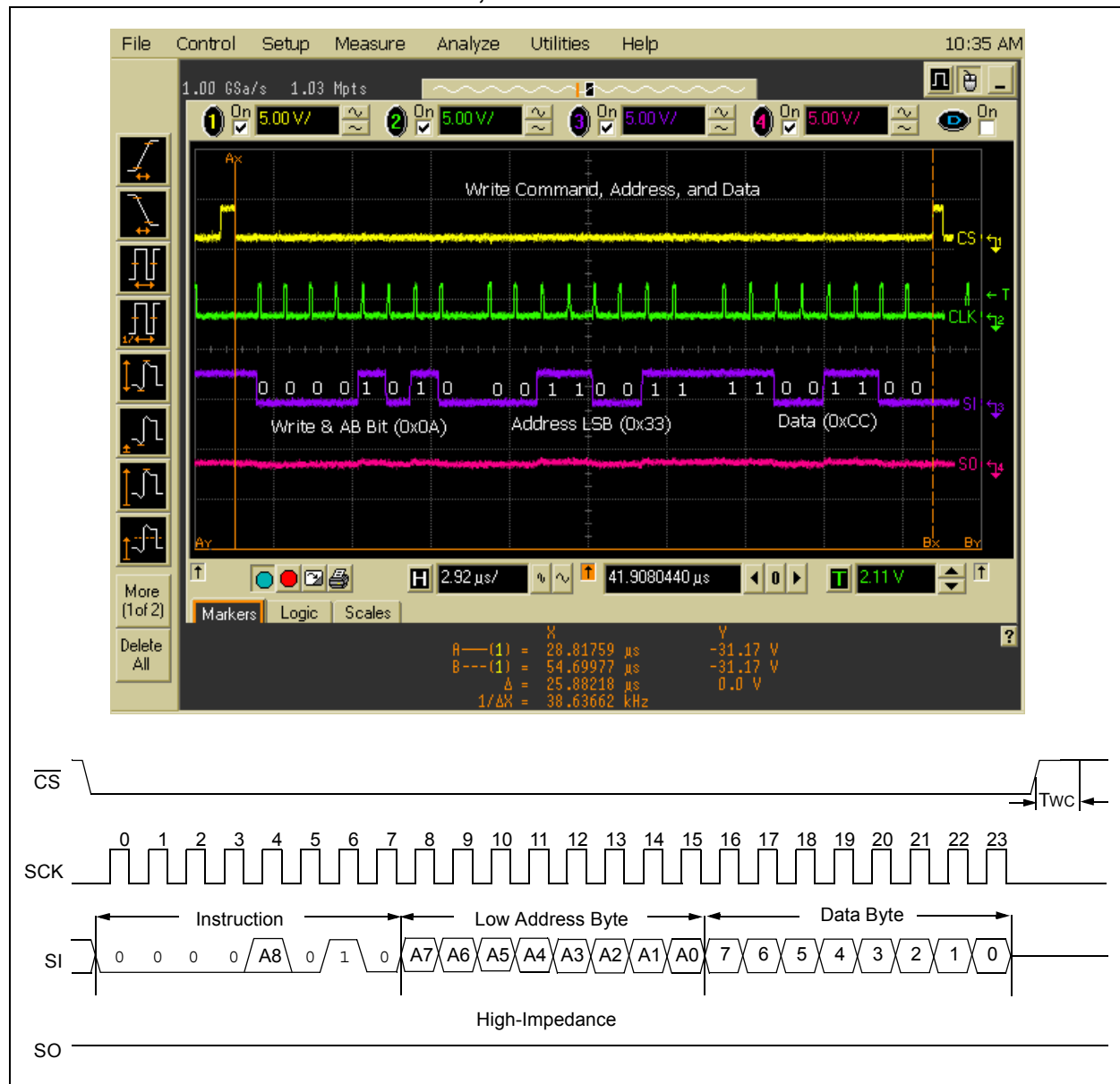
## BYTE WRITE COMMAND (OPCODE, ADDRESS AND DATA)

Figure 4 shows an example of the Write command. First, the device is selected by bringing Chip Select low (active). In this example, the Most Significant bit of the address is a '1'. This bit is embedded in the opcode (0x02 for a Write command), and so the value, 0x0A, is sent. The Low Address byte (0x33) is sent next. Finally, the data is clocked in, in this case, 0xCC. Once Chip Select is toggled at the end of this command, the internal write cycle is initiated. After the write cycle has begun, the WIP bit in the STATUS register can be polled to check when the write finishes. If polling is not used, a delay (~5ms) needs to be added to ensure the write has finished. This code uses WIP polling.

A page write can be accomplished by continuing to send data bytes to the device without toggling  $\overline{\text{CS}}$ . Up to 16 bytes can be written to the 25LC040A before a write cycle is needed. Once  $\overline{\text{CS}}$  is brought high after the data bytes have been transmitted, then the write cycle timer will begin and normal polling can be initiated.

The Page Write function provided in the firmware is used to program 16 bytes of data, starting at address 0x150. Because page writes cannot cross page boundaries, care must be taken to avoid having data wrap around to the beginning of the page and overwrite existing data.

**FIGURE 4: BYTE WRITE COMMAND, ADDRESS AND DATA**

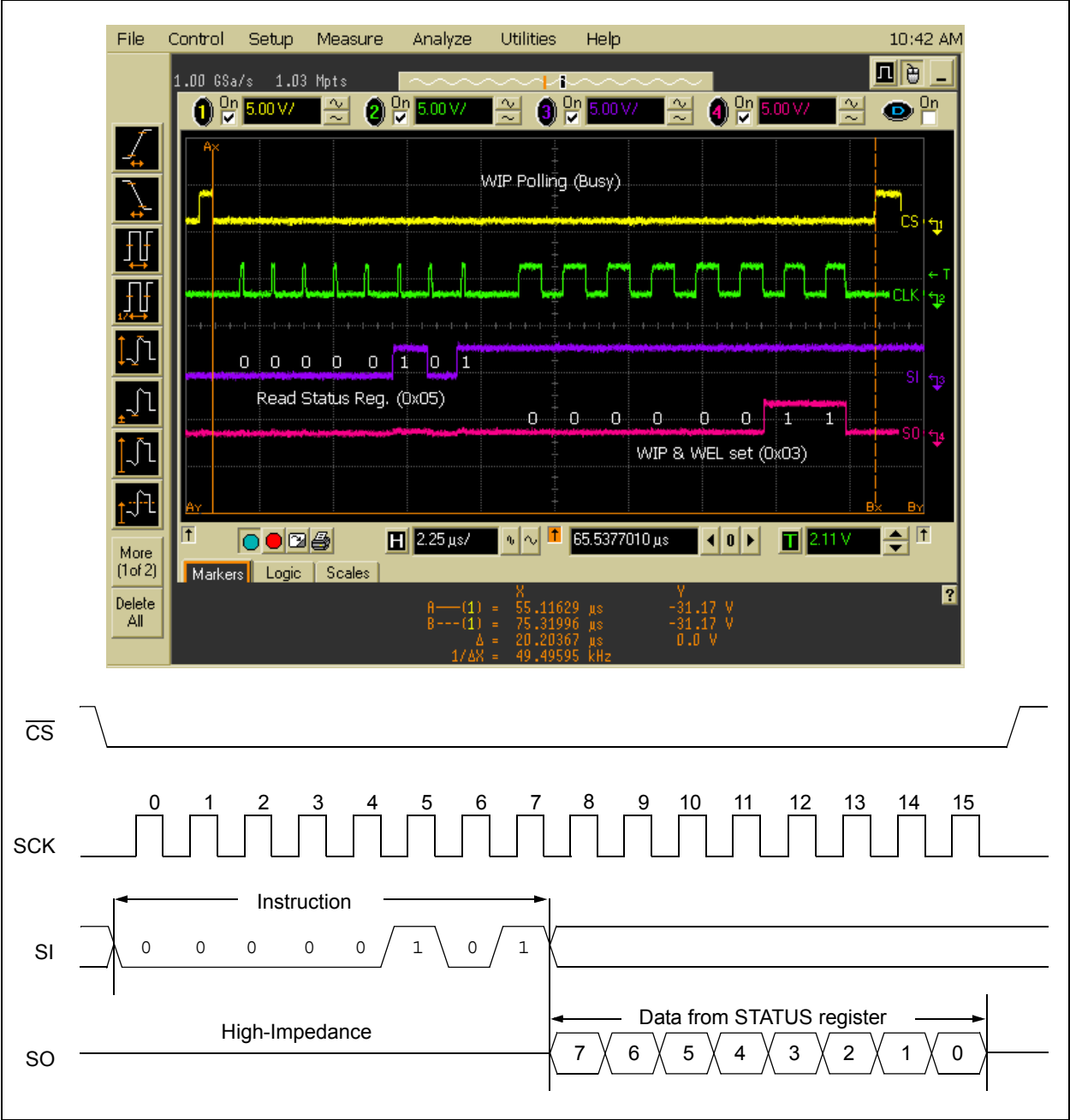


DATA POLLING (RDSR – CHECK FOR WIP SET)

After a valid Write command is given, the STATUS register can be read to check if the internal write cycle has been initiated, and it can continuously be monitored to look for the end of the write cycle. In this

case, the device is selected and the RDSR opcode (0x05) is sent. The STATUS register is then shifted out on the Serial Out (SO) pin resulting in a value of 0x03. Figure 5 shows that both the WEL bit (bit 1) and the WIP bit (bit 0) are set, meaning that the write cycle is in progress.

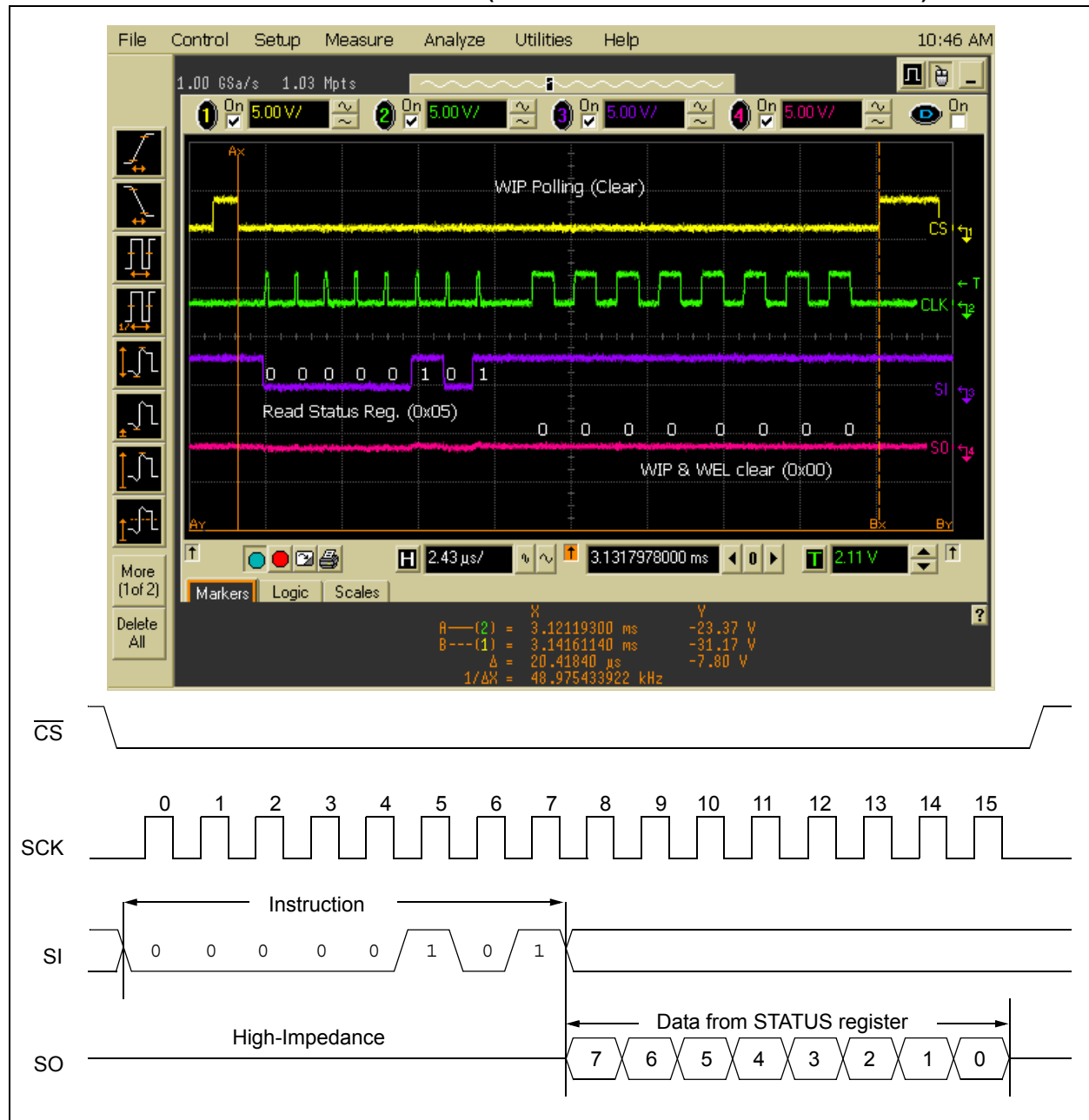
FIGURE 5: DATA POLLING (READ STATUS REGISTER TO CHECK WIP BIT)



## DATA POLLING FINISHED (RDSR – WIP BIT CLEARED)

The firmware remains in a continuous loop and the WIP status is evaluated until the bit is cleared. Figure 6 shows the Read Status Register command followed by a value of 0x00 being shifted out on the Serial Out (SO) pin. This indicates that the write cycle has finished and the device is now ready for additional commands. The WEL bit is also cleared at the end of a write cycle, which serves as additional protection against unwanted writes.

**FIGURE 6: DATA POLLING FINISHED (RDSR – WIP AND WEL BITS CLEARED)**

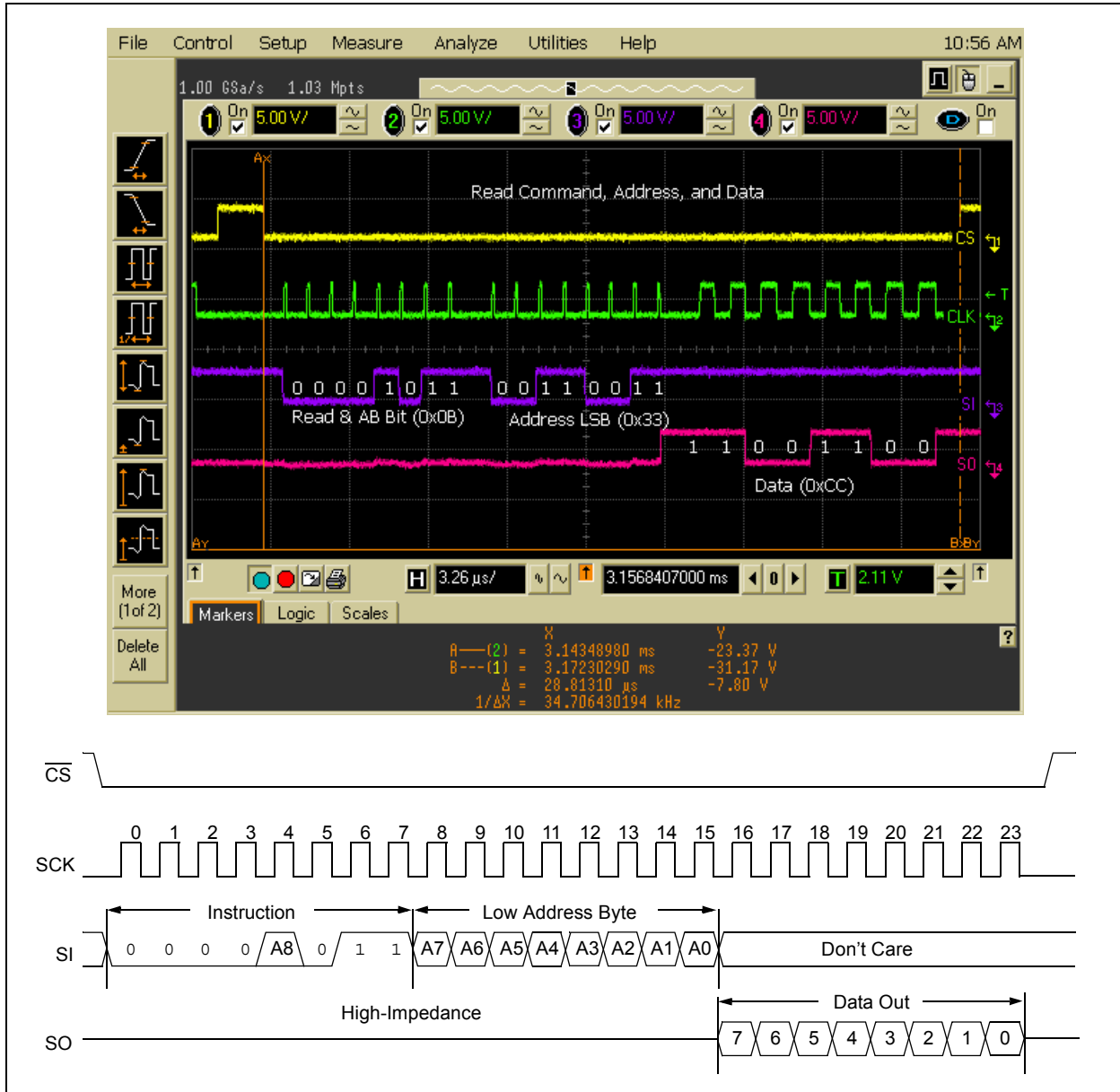


## READ COMMAND (OPCODE, ADDRESS AND DATA)

Figure 7 shows an example of the Read command. For this, the device is selected. As with the Write command, the Most Significant bit of the address is a '1'. Therefore, when combined with the Read opcode (0x03), the value 0x0B is sent. The Low Address byte, 0x33, is

then sent. Finally the data, 0xCC in this case, is clocked out on the Serial Out (SO) pin. In order to perform a sequential read, more clocks need to be generated. It is possible to read the entire chip by continuing to clock the device. Once the end of the array is reached, the data will wrap to the beginning of the array (address 0x000) and keep reading out until  $\overline{\text{CS}}$  is deselected or the device is no longer being clocked.

**FIGURE 7: READ COMMAND, ADDRESS AND DATA**





## CONCLUSION

These are some of the basic features of SPI communications on one of Microchip's dsPIC33F devices without the use of a hardware serial port. The code is highly portable and can be used on many dsPIC® DSCs with very minor modifications. Using the code provided, designers can begin to build their own SPI libraries to be as simple or as complex as needed. The code was tested on Microchip's "Explorer 16" Demonstration Board with the connections shown in Figure 1.

NOTES:

---

**Note the following details of the code protection feature on Microchip devices:**

- Microchip products meet the specification contained in their particular Microchip Data Sheet.
- Microchip believes that its family of products is one of the most secure families of its kind on the market today, when used in the intended manner and under normal conditions.
- There are dishonest and possibly illegal methods used to breach the code protection feature. All of these methods, to our knowledge, require using the Microchip products in a manner outside the operating specifications contained in Microchip's Data Sheets. Most likely, the person doing so is engaged in theft of intellectual property.
- Microchip is willing to work with the customer who is concerned about the integrity of their code.
- Neither Microchip nor any other semiconductor manufacturer can guarantee the security of their code. Code protection does not mean that we are guaranteeing the product as "unbreakable."

Code protection is constantly evolving. We at Microchip are committed to continuously improving the code protection features of our products. Attempts to break Microchip's code protection feature may be a violation of the Digital Millennium Copyright Act. If such acts allow unauthorized access to your software or other copyrighted work, you may have a right to sue for relief under that Act.

---

Information contained in this publication regarding device applications and the like is provided only for your convenience and may be superseded by updates. It is your responsibility to ensure that your application meets with your specifications. MICROCHIP MAKES NO REPRESENTATIONS OR WARRANTIES OF ANY KIND WHETHER EXPRESS OR IMPLIED, WRITTEN OR ORAL, STATUTORY OR OTHERWISE, RELATED TO THE INFORMATION, INCLUDING BUT NOT LIMITED TO ITS CONDITION, QUALITY, PERFORMANCE, MERCHANTABILITY OR FITNESS FOR PURPOSE. Microchip disclaims all liability arising from this information and its use. Use of Microchip devices in life support and/or safety applications is entirely at the buyer's risk, and the buyer agrees to defend, indemnify and hold harmless Microchip from any and all damages, claims, suits, or expenses resulting from such use. No licenses are conveyed, implicitly or otherwise, under any Microchip intellectual property rights.

#### **Trademarks**

The Microchip name and logo, the Microchip logo, Accuron, dsPIC, KEELoQ, KEELoQ logo, microID, MPLAB, PIC, PICmicro, PICSTART, PRO MATE, rPIC, and SmartShunt are registered trademarks of Microchip Technology Incorporated in the U.S.A. and other countries.


Amplab, FilterLab, Linear Active Thermistor, Migratable Memory, MXDEV, MXLAB, SEEVAL, SmartSensor and The Embedded Control Solutions Company are registered trademarks of Microchip Technology Incorporated in the U.S.A.

Analog-for-the-Digital Age, Application Maestro, CodeGuard, dsPICDEM, dsPICDEM.net, dsPICworks, ECAN, ECONOMONITOR, FanSense, FlexROM, fuzzyLAB, In-Circuit Serial Programming, ICSP, ICEPIC, Mindi, MiWi, MPASM, MPLAB Certified logo, MPLIB, MPLINK, PICkit, PICDEM, PICDEM.net, PICLAB, PICtail, PowerCal, PowerInfo, PowerMate, PowerTool, REAL ICE, rLAB, Select Mode, Smart Serial, SmartTel, Total Endurance, UNI/O, WiperLock and ZENA are trademarks of Microchip Technology Incorporated in the U.S.A. and other countries.

SQTP is a service mark of Microchip Technology Incorporated in the U.S.A.

All other trademarks mentioned herein are property of their respective companies.

© 2007, Microchip Technology Incorporated, Printed in the U.S.A., All Rights Reserved.

 Printed on recycled paper.

**QUALITY MANAGEMENT SYSTEM**  
**CERTIFIED BY DNV**  
**== ISO/TS 16949:2002 ==**

*Microchip received ISO/TS-16949:2002 certification for its worldwide headquarters, design and wafer fabrication facilities in Chandler and Tempe, Arizona; Gresham, Oregon and design centers in California and India. The Company's quality system processes and procedures are for its PIC® MCUs and dsPIC® DSCs, KEELoQ® code hopping devices, Serial EEPROMs, microperipherals, nonvolatile memory and analog products. In addition, Microchip's quality system for the design and manufacture of development systems is ISO 9001:2000 certified.*



---

## WORLDWIDE SALES AND SERVICE

---

### AMERICAS

#### Corporate Office

2355 West Chandler Blvd.  
Chandler, AZ 85224-6199  
Tel: 480-792-7200  
Fax: 480-792-7277  
Technical Support:  
<http://support.microchip.com>  
Web Address:  
[www.microchip.com](http://www.microchip.com)

#### Atlanta

Duluth, GA  
Tel: 678-957-9614  
Fax: 678-957-1455

#### Boston

Westborough, MA  
Tel: 774-760-0087  
Fax: 774-760-0088

#### Chicago

Itasca, IL  
Tel: 630-285-0071  
Fax: 630-285-0075

#### Dallas

Addison, TX  
Tel: 972-818-7423  
Fax: 972-818-2924

#### Detroit

Farmington Hills, MI  
Tel: 248-538-2250  
Fax: 248-538-2260

#### Kokomo

Kokomo, IN  
Tel: 765-864-8360  
Fax: 765-864-8387

#### Los Angeles

Mission Viejo, CA  
Tel: 949-462-9523  
Fax: 949-462-9608

#### Santa Clara

Santa Clara, CA  
Tel: 408-961-6444  
Fax: 408-961-6445

#### Toronto

Mississauga, Ontario,  
Canada  
Tel: 905-673-0699  
Fax: 905-673-6509

### ASIA/PACIFIC

#### Asia Pacific Office

Suites 3707-14, 37th Floor  
Tower 6, The Gateway  
Harbour City, Kowloon  
Hong Kong  
Tel: 852-2401-1200  
Fax: 852-2401-3431

#### Australia - Sydney

Tel: 61-2-9868-6733  
Fax: 61-2-9868-6755

#### China - Beijing

Tel: 86-10-8528-2100  
Fax: 86-10-8528-2104

#### China - Chengdu

Tel: 86-28-8665-5511  
Fax: 86-28-8665-7889

#### China - Fuzhou

Tel: 86-591-8750-3506  
Fax: 86-591-8750-3521

#### China - Hong Kong SAR

Tel: 852-2401-1200  
Fax: 852-2401-3431

#### China - Qingdao

Tel: 86-532-8502-7355  
Fax: 86-532-8502-7205

#### China - Shanghai

Tel: 86-21-5407-5533  
Fax: 86-21-5407-5066

#### China - Shenyang

Tel: 86-24-2334-2829  
Fax: 86-24-2334-2393

#### China - Shenzhen

Tel: 86-755-8203-2660  
Fax: 86-755-8203-1760

#### China - Shunde

Tel: 86-757-2839-5507  
Fax: 86-757-2839-5571

#### China - Wuhan

Tel: 86-27-5980-5300  
Fax: 86-27-5980-5118

#### China - Xian

Tel: 86-29-8833-7250  
Fax: 86-29-8833-7256

### ASIA/PACIFIC

#### India - Bangalore

Tel: 91-80-4182-8400  
Fax: 91-80-4182-8422

#### India - New Delhi

Tel: 91-11-4160-8631  
Fax: 91-11-4160-8632

#### India - Pune

Tel: 91-20-2566-1512  
Fax: 91-20-2566-1513

#### Japan - Yokohama

Tel: 81-45-471-6166  
Fax: 81-45-471-6122

#### Korea - Gumi

Tel: 82-54-473-4301  
Fax: 82-54-473-4302

#### Korea - Seoul

Tel: 82-2-554-7200  
Fax: 82-2-558-5932 or  
82-2-558-5934

#### Malaysia - Penang

Tel: 60-4-646-8870  
Fax: 60-4-646-5086

#### Philippines - Manila

Tel: 63-2-634-9065  
Fax: 63-2-634-9069

#### Singapore

Tel: 65-6334-8870  
Fax: 65-6334-8850

#### Taiwan - Hsin Chu

Tel: 886-3-572-9526  
Fax: 886-3-572-6459

#### Taiwan - Kaohsiung

Tel: 886-7-536-4818  
Fax: 886-7-536-4803

#### Taiwan - Taipei

Tel: 886-2-2500-6610  
Fax: 886-2-2508-0102

#### Thailand - Bangkok

Tel: 66-2-694-1351  
Fax: 66-2-694-1350

### EUROPE

#### Austria - Wels

Tel: 43-7242-2244-39  
Fax: 43-7242-2244-393

#### Denmark - Copenhagen

Tel: 45-4450-2828  
Fax: 45-4485-2829

#### France - Paris

Tel: 33-1-69-53-63-20  
Fax: 33-1-69-30-90-79

#### Germany - Munich

Tel: 49-89-627-144-0  
Fax: 49-89-627-144-44

#### Italy - Milan

Tel: 39-0331-742611  
Fax: 39-0331-466781

#### Netherlands - Drunen

Tel: 31-416-690399  
Fax: 31-416-690340

#### Spain - Madrid

Tel: 34-91-708-08-90  
Fax: 34-91-708-08-91

#### UK - Wokingham

Tel: 44-118-921-5869  
Fax: 44-118-921-5820