



FLIP

PC-based FLexible In-system Programmer

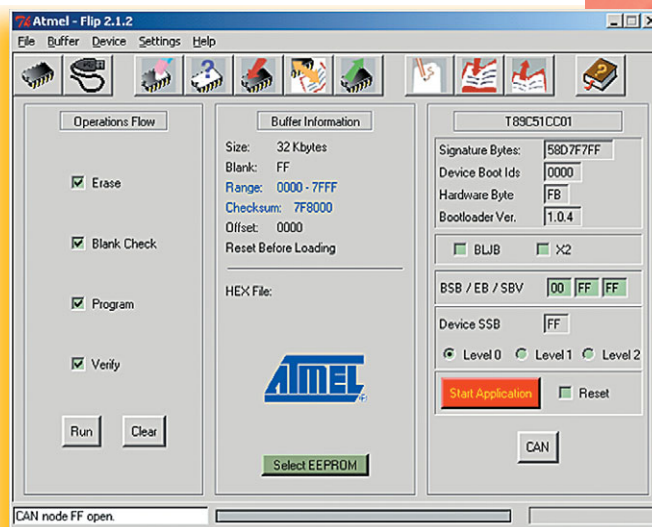
A POWERFUL AND USER FRIENDLY SOFTWARE TOOL TO PROGRAM ATMEL C51 FLASH MCUs

FLIP is a free PC-based software tool that supports the In-System Programming (ISP) of Atmel's Flash C51 microcontrollers through various communication interfaces, including RS232, USB and CAN links, both in Windows® 9x/Me/2000/XP, Windows NT® and Linux® environments

FLIP can be used through a Graphical User Interface or launched from a DOS command window.

FLIP is a powerful toolset which enables the user to easily embed Atmel's ISP function libraries (DLL) within their applications without having to know the details of Atmel's ISP protocols.

FLIP adds flexibility, power and user-friendliness to Atmel Flash C51 devices In-System Programming.



Available Free on Atmel's Web Site!

Key Features and Benefits

- Supports ISP Mode within Atmel's Flash C51 MCUs through RS232, USB and CAN
- Runs on both Windows and Linux Platforms
- No Additional Hardware Needed
- Powerful Set of DLLs
- DOS-executable Version Available (BatchISP)
- Enters ISP Mode without Manual Settings on the Target Board (AutoISP)
- Supports Major CAN Interfaces (PEAK, IXXAT®, and Vector)
- Debug Mode to Visualize and Check Traffic between FLIP and the Target Hardware
- Enhanced On-line Help
- Free Tool



FLIP C51 FLASH MCU FLEXIBLE IN-SYSTEM PROGRAMMER

Atmel Corporation

2325 Orchard Parkway
San Jose, CA 95131
USA
TEL.: 1 (408) 441-0311
FAX.: 1 (408) 487-2600

Regional Headquarters Europe

Atmel Sarl
Route des Arsenaux 41
Case Postale 80
CH-1705 Fribourg
Switzerland
TEL.: (41) 26-426-5555
FAX.: (41) 26-426-5500

Asia

Room 1219
Chinachem Golden Plaza
77 Mody Road Tsimshatsui
East Kowloon
Hong Kong
TEL.: (852) 2721-9778
FAX.: (852) 2722-1369

Japan

9F, Tonetsu Shinkawa Bldg.
1-24-8 Shinkawa
Chuo-ku, Tokyo 104-0033
Japan
TEL.: (81) 3-3523-3551
FAX.: (81) 3-3523-7581

Product Contact

La Chanterrie
BP 70602
44306 Nantes Cedex 3
France
TEL.: (33) 2 40 18 18 18
FAX.: (33) 2 40 18 19 60

Web Site

<http://www.atmel.com>

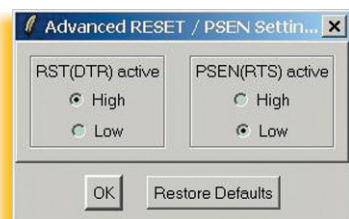
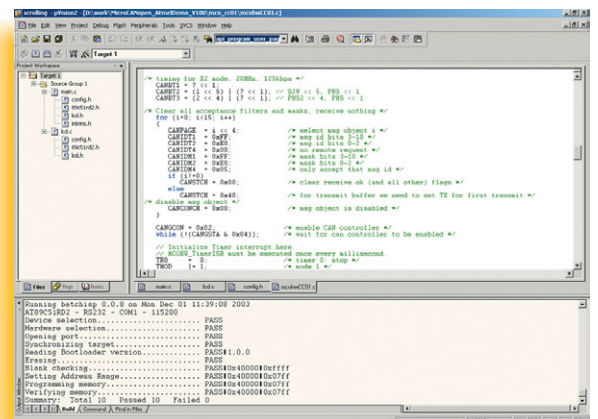
```
ATMEL FLIP Command Line Interpreter
Running batchisp 0.0.9 on Mon Dec 08 10:32:44 2003

AT89C51RD2 - RS232 - COM1 - 115200

Device selection..... PASS
Hardware selection..... PASS
Opening port..... PASS
Synchronizing target..... PASS
Reading Bootloader version..... PASS 1.0.0
***** Easy tests *****
Reading Signature Bytes..... PASS 58 D7 EC EF
Reading Boot ID1..... PASS 0x00
Reading Boot ID2..... PASS 0x00
Selecting FLASH..... PASS
Erasing..... PASS
Blank checking..... PASS 0x0000 0xFFFF
Filling buffer..... PASS 0x0000 0xFFFF 0xAA
Programming memory..... PASS 0x0000 0xFFFF
Verifying memory..... PASS 0x0000 0xFFFF
***** Security tests *****
Erasing..... PASS
```

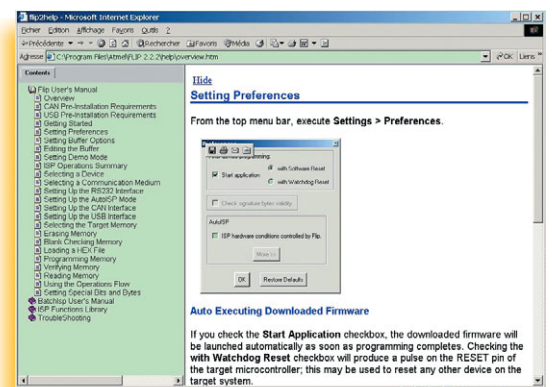
BatchISP allows ISP on a large number of parts; this function also includes product serialization.

BatchISP allows the developer to write code, compile, link, produce and download HEX files to the target device without leaving the IDE, such as Keil™ µVision2.



AutoISP – enter ISP mode without manual settings on the target board.

On-line help including FLIP and BatchISP user manuals, ISP protocol function descriptions and troubleshooting.



© Atmel Corporation 2003. All rights reserved. Atmel® and combinations thereof are the registered trademarks of Atmel Corporation or its subsidiaries. IXXAT®, Linux®, Windows®, Windows NT® are the registered trademark of IXXAT Automation GmbH, Linux Torvalds and Microsoft Corporation, respectively. Keil™ is a trademark of Keil Software Inc. Other terms and products may be trademarks of others.

4062A-C51-12/03/10M

CAN Interface Support

